

Geography – Sky, land or sea ?



- 1) Back table with paper.
- 2) Provide a variety of transport toys that travel on the land, on the sea and in the sky. Also provide trays of dark/light blue and black/grey paint.
- 3) Encourage the children to place a car in to the paint and then ride it over the paper.

Extension ideas:

- Can the children place the transport toys in to the corresponding colours paint and place it in an appropriate place on the paper? Label areas on the page to support sorting,

Light blue for sky, Black/grey for the road and dark blue for the sea?

Key words

Car Truck Bus Boat
Aeroplane
Road Sky Sea Track

Resources you may need

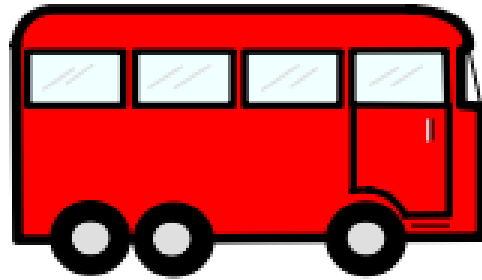
Large paper

Transport toys

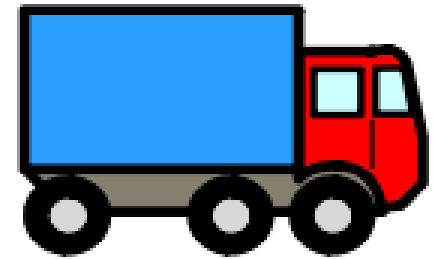
Paint (dark/light blue, grey, black)



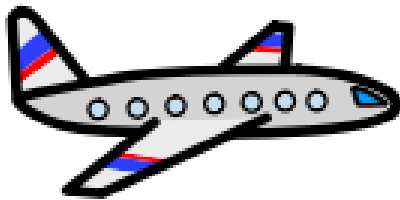
car



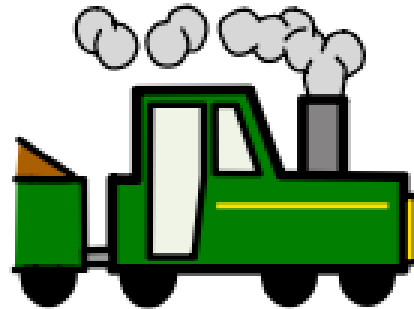
bus



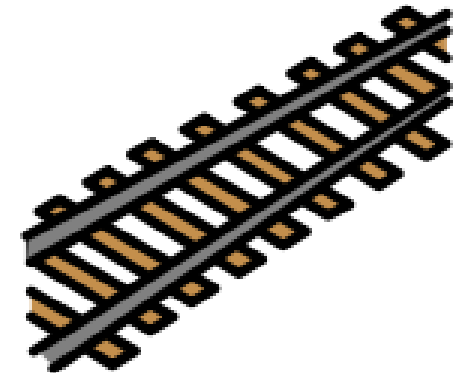
truck



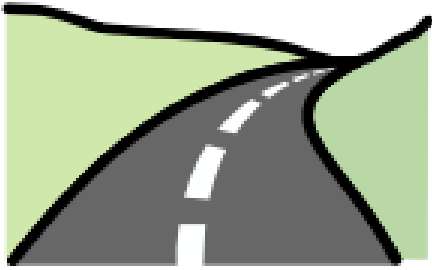
aeroplane



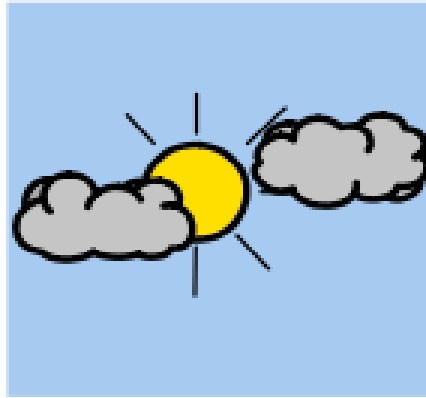
train



track



road



sky

